

RELAZIONE GEOLOGICA

COMMITTENTE : COMUNE DI RAPOLLA

PROGETTO : REGOLAMENTO URBANISTICO COMUNALE

SEZIONI GEOLOGICHE

Scala 1 : 2.000

Melfi DICEMBRE 2015

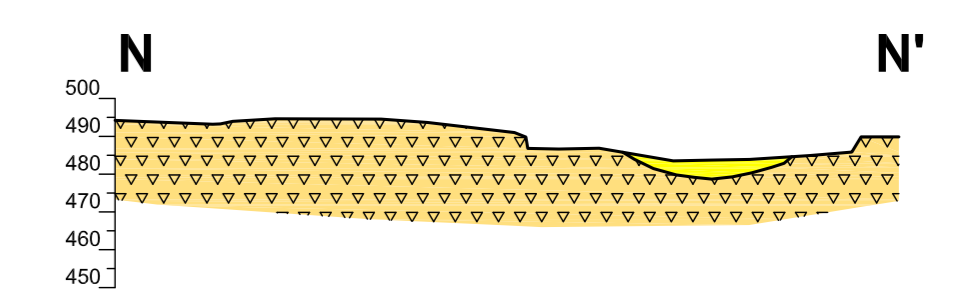
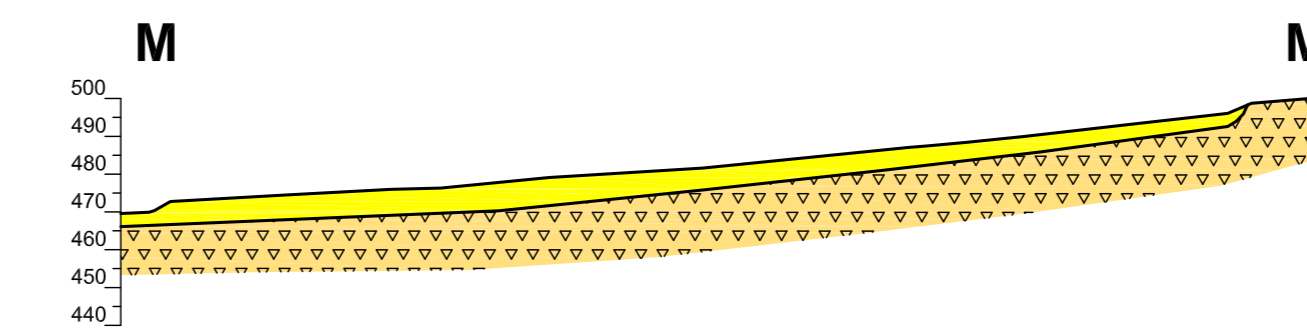
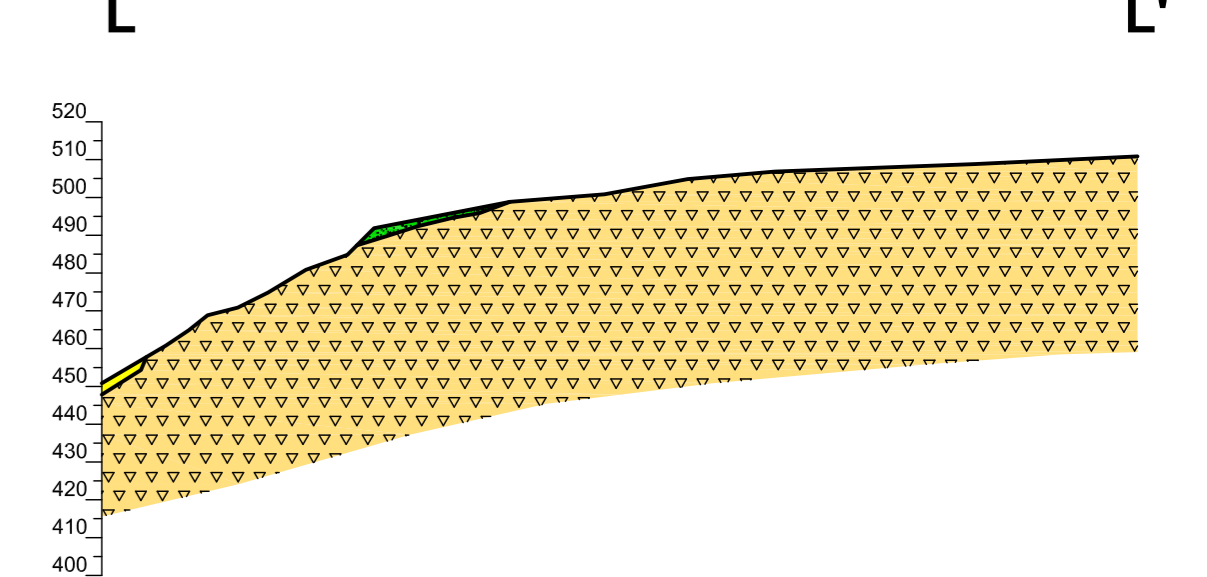
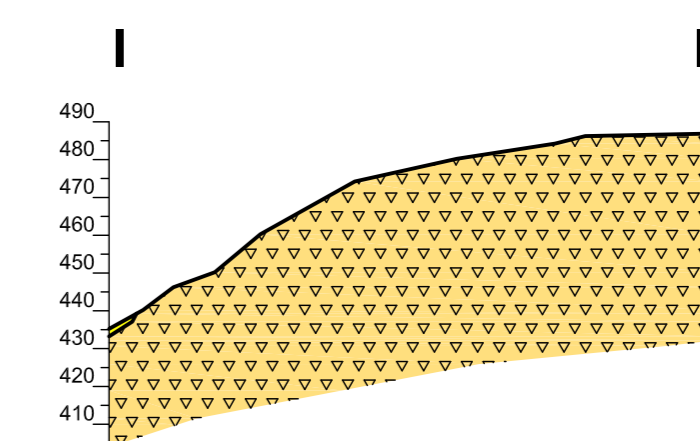
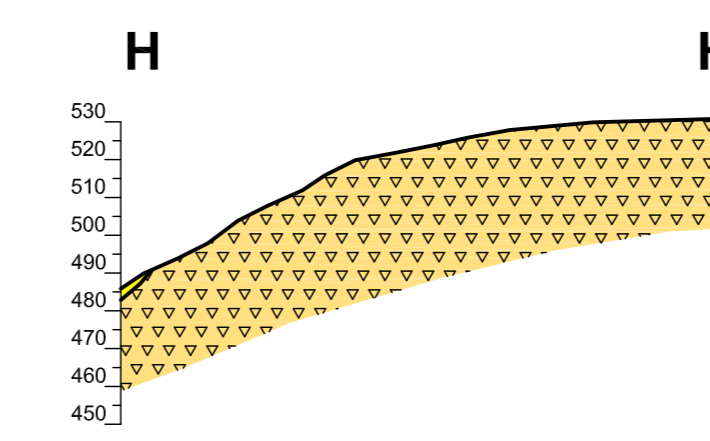
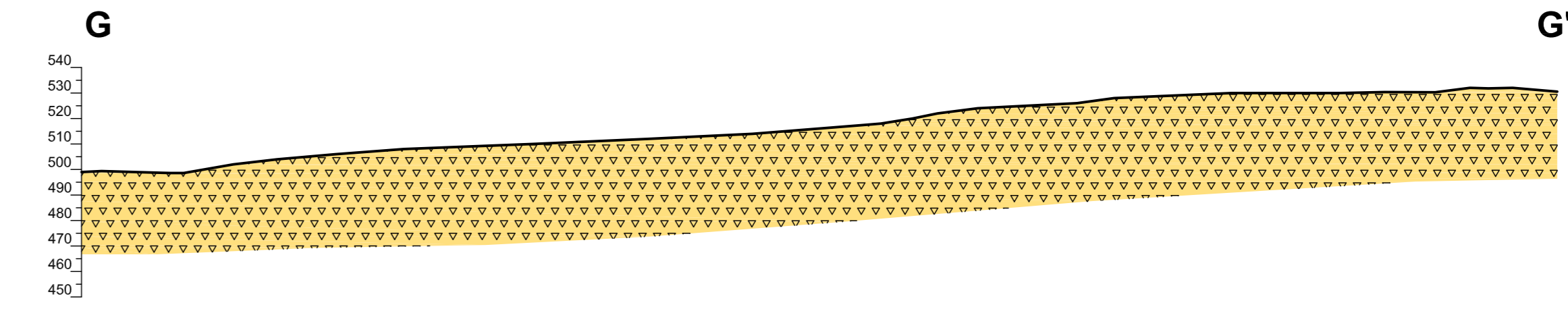
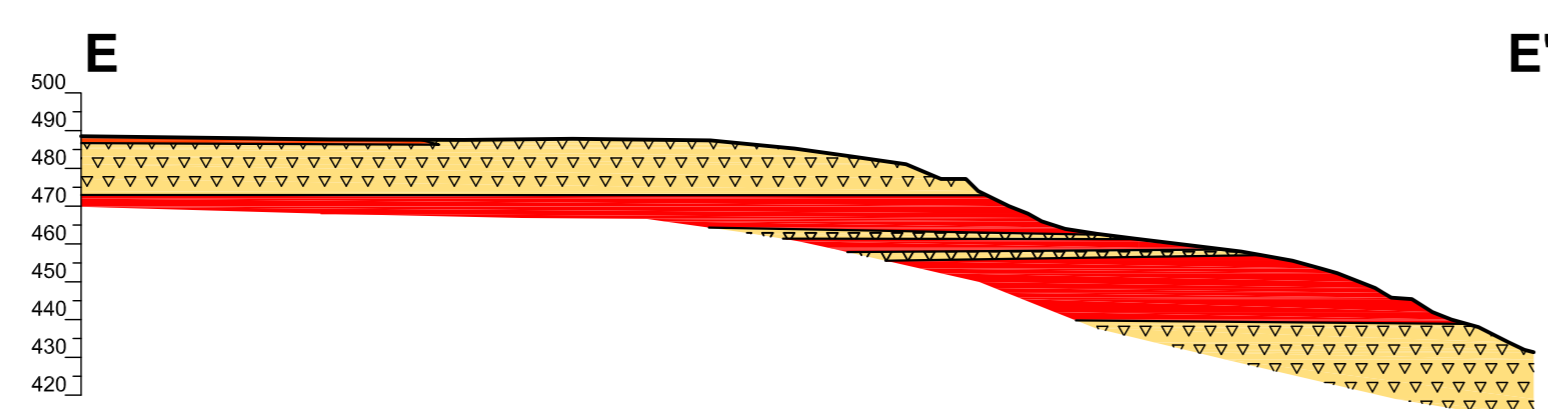
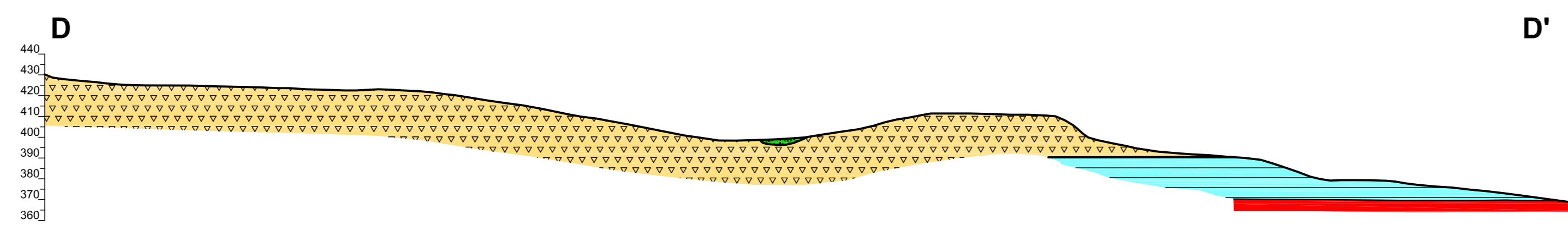
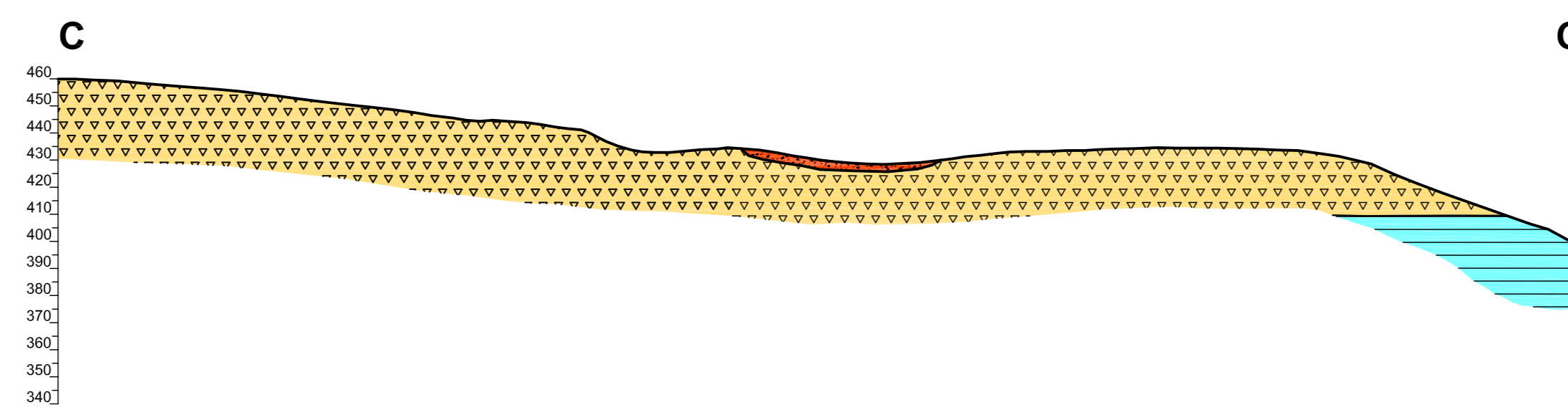
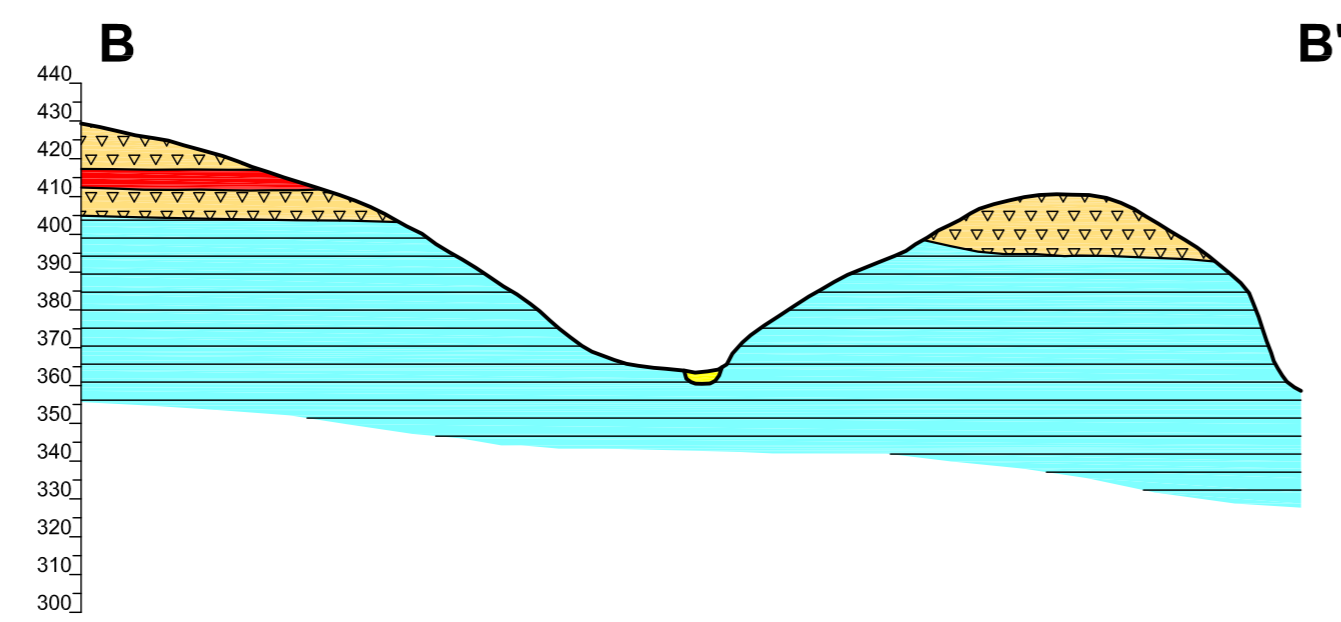
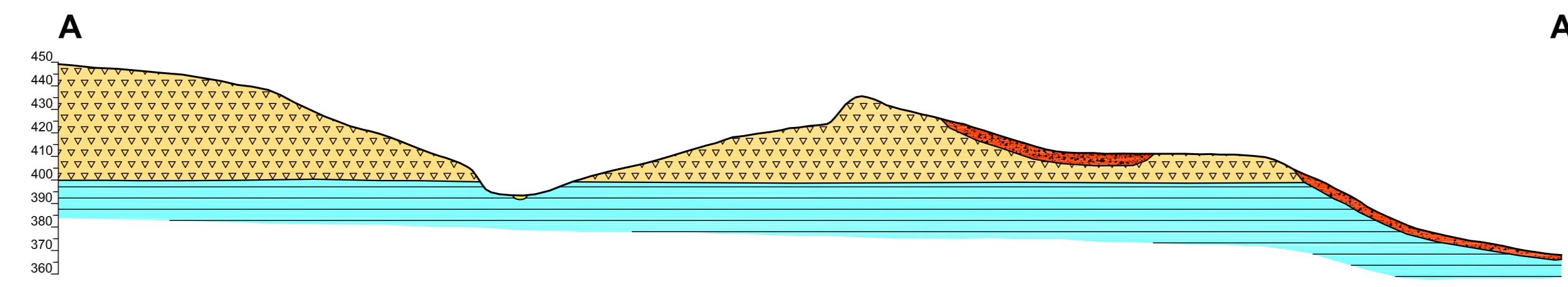


Tavola n.3

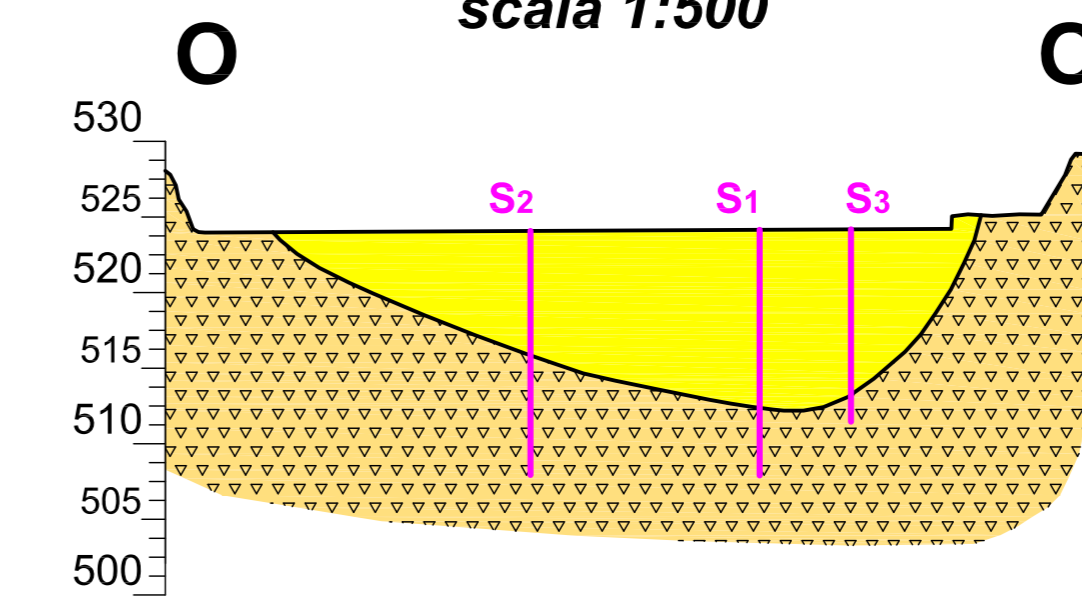
GEOLOGO REDATTORE
Dott. Geol. Tucci Clemente Marco

LEGENDA

- Riporti antropici di spessore non superiore a 3 mt
- Riporti antropici, a luoghi anche di notevole spessore (> 3 mt)
- Depositi alluvionali *attuali*
- Depositi alluvionali *recenti*
- Lave foiditiche
- Tufi scuri
- Depositi fluvio-lacustri e lacustri costituiti da tuffi



Sezione Zona D4 scala 1:500



S Sondaggi geognostici